

# GREENEYE



## VNIR Hyperspectral Imaging Camera (400 – 1000 nm)

Introducing the **GreenEye**, our pushbroom VNIR hyperspectral camera that allows the acquisition of real-time spectral data with very high spatial resolution.

With precision and superior sensitivity, our camera provides detailed spectral data to enhance your imaging applications. Capture high-quality image data, perform accurate process analysis, and uncover details of your measurement data with ease.

Combining superior optical design with high-end electronics and a sensitive CMOS detector, the **GreenEye's** performance makes it an ideal tool even for the most demanding laboratory or process analytical applications.

### Application areas:

- Print & Dying Industry
- Electronics (LEDs or other emitters)
- Food Quality Checks
- Agriculture / Forestry
- General Sorting
- Medical Applications
- Mining Industry
- Phenotyping



### Features:

- 1082 spectral pixels
- ROI (selectable region of interest) & Multi-ROI
- Robust design without moving parts
- GigE Vision standard interface
- Compact and lightweight design



Website



LinkedIn



## Technical Specifications:

### GreenEye

#### Spectrograph

Spectral range	typ. 400 to 1000 nm
Dispersion	0.7 nm/px
Spectral resolution	<7 nm (with 80 µm slit)
Spatial resolution	rms spot radius < 35 µm
FOV	adaptable
Smile	< 90 µm
Keystone	< 30 µm
F-number	2.8
Standard slit width	80 µm (30, 50 and 100 µm available)

#### Electronics

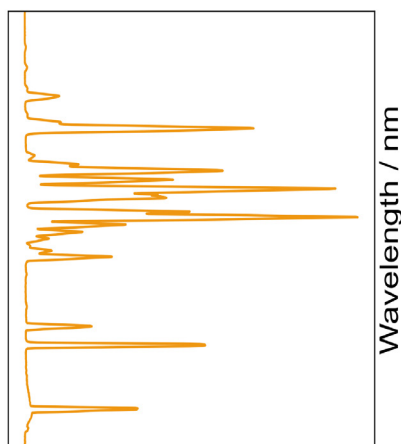
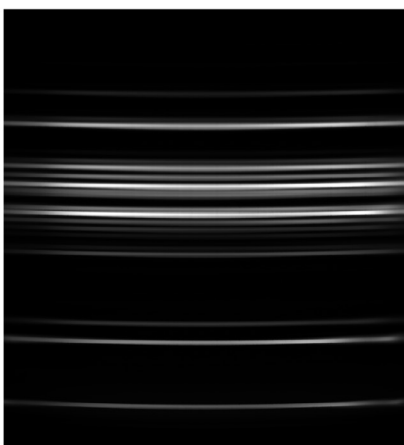
Sensor	CMOS enhanced in VNIR range
Pixels in full frame	1312 x 1082 (spatial x spectral) pixels
Pixel size	8 µm x 8 µm
Bit depth	12 bit
Frame rate	>130 fps at ≤ 7 ms exposure time
Data interface	GigE Vision
Power consumption	< 4.8 W
Power supply	12 V DC

#### Operating Conditions

Temperature (operating)	0 °C to + 50 °C
Temperature (storage)	-10 °C to + 50 °C

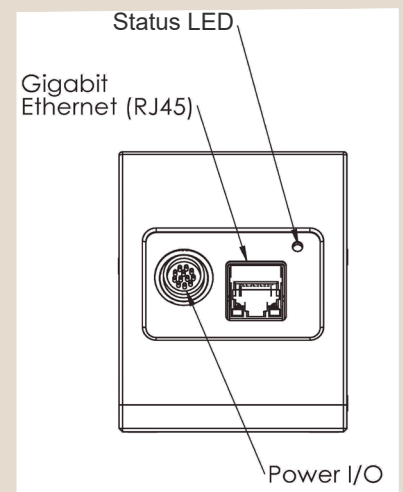
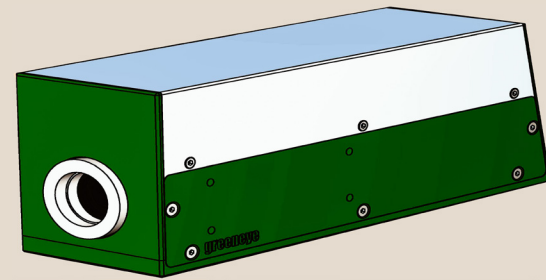
#### Mechanics

Dimensions l x w x h	216 x 67 x 83 mm <sup>3</sup>
Weight	1.6 kg
Lens mount	standard C-mount



As a well-established manufacturer of spectroscopic measurement equipments, **INNO-SPEC** provides optimized solutions for your individual applications; for example, customized OEM cameras for machine builders & system suppliers.

Please note that any specs on the data sheet are subject to change without prior notice.



## Accessories:

- Modular tungsten halogen or LED lighting
- Different objective lenses: ranging between 6 mm & 50 mm focal length
- Conveyor belt, stepper table or tripod with a rotary stage as bundle solutions
- Software packages for customized applications